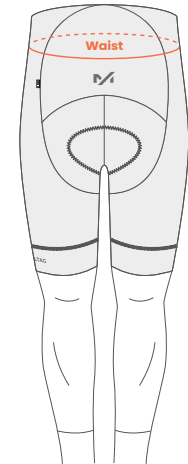
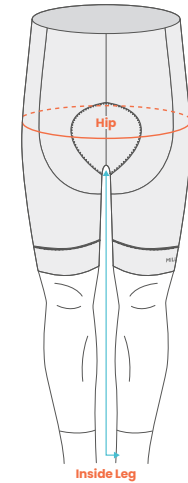
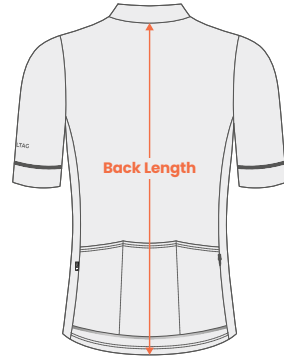
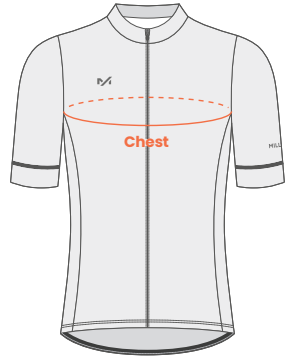


# Sizing Guide



## Men's (Club Fit)

Size	Chest (Cm)	Back Length (Cm)	Chest (Inches)	Back Length (Inches)
XS	88	65	35	25.6
S	93	68	37	26.7
M	98	70	39	27.5
L	103	72	41	28.3
XL	108	74	43	29
XXL	113	76	45	30

## Women's (Club Fit)

Size	Chest (Cm)	Back Length (Cm)	Chest (Inches)	Back Length (Inches)
XS (6)	82	62	32	24.4
S (8)	86	64	34	25.2
M (10)	90	66	35.5	26
L (12)	94	68	37	26.7
XL (14)	98	70	38.5	27.5
XXL (16)	102	73	40	28.7

## Men's (Pro Fit)

Size	Chest (Cm)	Back Length (Cm)	Chest (Inches)	Back Length (Inches)
XS	83	57.5	33	22.7
S	88	59.5	35	23.5
M	93	61	37	24
L	98	63.5	39	25
XL	103	65	41	25.6
XXL	108	67	43	26.3

## Women's (Pro Fit)

Size	Chest (Cm)	Back Length (Cm)	Chest (Inches)	Back Length (Inches)
XS (6)	78	57.5	30	22.7
S (8)	82	59.5	32	23.5
M (10)	86	61	34	24
L (12)	90	63.5	35.5	25
XL (14)	94	65	37	25.6
XXL (16)	98	67	38.5	26.3

## Men's

Size	Waist (Cm)	Hip (Cm)	Inside Leg (Cm)	Waist (Inches)	Hip (Inches)	Inside Leg (Inches)
XS	71	91	79	28	36	31
S	76	95	81	30	37.5	32
M	81	99	83	32	39	33
L	86	103	85	34	40.5	34
XL	91	107	87	36	42	35
XXL	96	111	89	38	43.5	36

## Women's

Size	Waist (Cm)	Hip (Cm)	Inside Leg (Cm)	Waist (Inches)	Hip (Inches)	Inside Leg (Inches)
XS (6)	64	88	76	25	34.5	29.5
S (8)	69	92	78	27	36	30.5
M (10)	74	96	80	29	37.5	31.5
L (12)	79	100	83	31	39.5	32.5
XL (14)	83	104	84	33	41	33
XXL (16)	87	108	85	35	42.5	33.5